



LIFE NAVIGATORS

Your Disability Partner EST. 1949

Life Navigators 40th Annual Challenger Event

Honoring Jim Phillips

Golf. Dinner. Auction.

Blue Mound Golf and Country Club

Monday, September 18, 2023



The mission of Life Navigators is to improve the quality of life for individuals with disabilities and their families.

Your Disability Partner



LIFE NAVIGATORS
Your Disability Partner EST. 1990



Golf and Hole Events

Shamble Format Using Two Best Balls

MEET OUR CONSUMERS

HOLE #3 Tweet a Photo with Roger or Anthony

HOLE #7 Get a Pic with Cindy or Kimberly
Hole-in-One: Chance to Win \$10,000

HOLE #10 Visit Kevin, Matt and Daire
Complimentary Beverages and Snacks

Hungry or Thirsty? Watch for Dan speeding around
the course with complimentary drinks and snacks.

TEAM EVENTS

(Net Team Best Ball)

1st Place: \$100 Pro Shop gift card each
2nd Place: \$75 Pro Shop gift card each
3rd Place: \$50 Pro Shop gift card each

INDIVIDUAL HOLE EVENTS

(Winners receive a \$75 Pro Shop gift card)

WOMEN: Straightest Drive — Hole #1
Closest to the Pin — Hole #7
MEN: Straightest Drive — Hole #10
Closest to the Pin — Hole #13
ALL: Longest Putt — Hole #4
Longest Putt — Hole #18



Meet Our Honoree

Jim Phillips

Jim is a Partner at Godfrey & Kahn, S.C., where he has been a corporate and tax attorney for over 40 years. He has taught courses at the University of WI-Madison Law School. A top-rated attorney, Jim was named a 2016 Leader in the Law by the WI Law Journal. He has been selected to the WI Super Lawyers® list since 2005 and has been listed in Best Lawyers in America for Tax Law since 1995.



Committed to philanthropy and volunteerism, Jim has been an active board and committee member on many nonprofit organizations. He is on the board of the Milwaukee Repertory Theater, where he currently serves as Treasurer. Jim is also on the board of MKE Urban Stables, an organization which provides Equine Assisted Therapy and Equine Assisted Learning programs benefiting many individuals, including kids and adults with disabilities. He also served on the Whitefish Bay Public Education Foundation Board of Directors for many years.

Jim was involved on our Board for over twelve years, dedicating his time to our Executive, Finance, Trust and HR committees. Serving as our Finance Committee Chair, the organization realized significant financial growth and eliminated our building debt to secure bright futures for kids and adults with disabilities. Under his leadership as the Chair of the Trust Committee, the program expanded to offer multiple trust options to impact individuals with disabilities of all ages.

Jim is the Secretary of the Board of the EAA in Oshkosh, the nonprofit group known by many for its annual fly-in in Oshkosh. He has also built two airplanes and enjoys flying in his free time. Jim also stays active by biking and skiing.

The Challenger Event Impact

This year's event will positively impact individuals and families with disabilities. Having a brother with a disability, Jim's personal connection to our mission highlights the impact of community-based disability support services. During his career, he has worked with many families with disabilities who rely on benefits and entitlement programs. As traditional benefit programs change, individuals with disabilities need a financial plan for the future. Through our Trust & Futures Planning Program, we walk families through this planning and personalize it to meet their needs. This peace of mind means so much for families that their loved one will enjoy the highest quality of life and a secure future.

Timeline of Events

Positively Impacting Kids, Adults and Families with Disabilities

- 10:30 am Golf Registration & Lunch
- 12:00 pm Shotgun Start for Golfers
- 5:00 pm Silent Auction, Complimentary Hors d'oeuvres & Cocktails
- 6:15 pm Dinner, Program & Auction (Jacket Required)

WELCOME THE HOMER HOUR

Steve "Homer" True from ESPN Milwaukee will be broadcasting live on the porch from 5-6 pm.

Lunch & Dinner Menus

Classic Grill Out Golfer Buffet Lunch

- Brats, Hot Dogs & Burgers
- Potato & Pasta Salad
- Chips
- Fresh Fruit
- Cookies & Bars



Evening Program Plated Dinner

Squash Ribbon Salad with Arugula, Squash Ribbons, Dried Fruit, Toasted Pepitas, Crumbled Goat Cheese & Cider Vinaigrette
Served with Bread & Butter

Surf & Turf Entree

- Grouper & Short Rib
- Mediterranean Fish Seasoning
- Garlic Mashed Potatoes
- Broccoli

Vegetarian Entree

- Zucchini Pasta
- Featuring Blistered Tomatoes,
- Seasonal Vegetables & Garlic
- Herb Salad

Chef's choice plated desserts

Your Gift Today Will Support Kids and Adults

Ensuring Safe, Happy and Healthy Lives

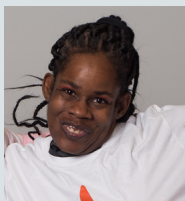
\$1,000 Futures
Planning
Program



FUTURES PLANNING
FOR KIM

Invest in 100 Service Hours
for Families

\$500 Emergency
Needs
Program



A SAFE HOME
FOR SHANTRESE

Provide Emergency Move Items
for 5 Individuals in Crisis

\$250 Information
& Education
Program



CONNECTIONS
FOR JORGE

Connect 25 Families to
Community Resources

\$100 Self-Advocacy
& Independence
Program



FRIENDSHIPS
FOR ROGER

Support an Event for 10 Families
to Develop a Network of Support

Matching Gift Challenge

Double Your Impact Today

To Celebrate 40 Years,
All Donations Will Be Matched Up to \$40,000!

Thank You to Our Sponsors

PLATINUM SPONSORS

Curt & Sue Culver
Godfrey & Kahn
Haskin Law Office
Chris & John McDermott
Dick & Mary Lou McGuire
Roger & Cindy Schaus

GOLD SPONSORS

The Boerke Company, Inc.
Camp Bar/Hackbarth
Hospitality Group
The Hickory Fund
Johnson Financial Group
Murphy & Prachthauser
O'Leary & Anick
John & Maryanne Plant
Quarles
The Riverwood Wealth
Management Group
at Morgan Stanley
Harris & Pam Turer
John & Vicki Wachniak
Ray & Kelly Wilson

SILVER SPONSORS

Baird & The Voisin Family
First Business Bank
Pegasus Partners

BRONZE SPONSORS

Associated Bank
Mick Butterfield and Andrew Haag
Executive Search Partners
Godfrey & Kahn
Great Midwest Bank
Impact General Contracting
Dr. Craig & Ann M. Larson
Living Trust
Prairie Trust
Jay Yuergens & Joni
Anderson-Yuergens
Zilber Property Group

BEVERAGES & SNACKS

CannedWater4Kids
PepsiCo
Dan & Amanda Witkowski

BEVERAGE CARTS

R&B Wagner, Inc.
Shorewest Realtors

CHOCOLATE

Ruthmansdorfer Law Group, SC

GOLF BALLS

Haskin Law Office

GOLF COURSE SIGNAGE

Imprint Digital Printing & Design

HOLE-IN-ONE

Reinhart Boerner Van Deuren s.c.

INVITATION

Creative Graphic Imaging, LLC

PHOTOGRAPHY

Mike & Maggie Butterfield

PROGRAM BOOKLET

National Benefits Group

Thank You to Our Sponsors

TABLE SPONSORS

Dave Kundert
Mike & Ginny McBride
Dick & Sue Pieper
R&B Wagner, Inc.

IMPACT SPONSORS

Ruthmansdorfer Law Group, SC
Eric & Deanna Tillisch

HOLE SPONSORS

Circle Electric, Inc.
Entasis Asset Management
Full Circle Construction, LLC
Lemberg
Hutch, Brenda & Allison Renk
Robertson Ryan & Associates
Suburban Asphalt Co., Inc.
Kasey Tillisch
Woodman's Markets
Grace Yuergens, Ava Yuergens &
Ben Otto

CHALLENGER GIFTS

Tom & Maripat Dalum
Russ & Sue Darrow
Greg & Sandy Groth
Todd & Liz Krieg
Duane & Connie McAllister
Mike & Ginny McBride
John & Cathy McCarthy
Dick & Mary Lou McGuire
Pieper Electric
John & Maryanne Plant
Amanda Stahmann
Scott & Mary Ellen Stanek
Mike & Nancy Steffes
Swimming Pool Services, Inc.
Stephen L Werner, CLU
& Associates



Thank you to
our donors who
committed after
the printing of
this program

RECEPTION

Dave & Paula Strelitz

SAVE THE DATE POSTCARD

Murphy & Prachthauser, S.C.

TECHNOLOGY

Events by Design

THANK YOU POSTCARD

Arbit Orthodontics

VOICE AUCTION

Steve Balistreri
Executive Search Partners
Scott Carlson
Chris & Deb Doughty
Greg & Sandy Groth
Tim Hansen
Mike Harvey
Scott Latzke
Kevin & Jean Matkin
Mike & Ginny McBride
Chris & John McDermott
Chris Richey
Roger & Cindy Schaus

Our Voice

Auction Items

**Your Bid Today Will
Make a Direct Impact**

We Are Marquette

Marquette fans will love this bench chair that was used in the days of Hall of Fame coach Al McGuire. The bench includes signatures from Bo Ellis, Earl Tatum, Jim Boylan, Marcus Washington, Tony Smith, Bill Neary, Steve Raymonds, Greg Shimon, Amal McCaskill, Jerry Homan and Randy Buckman. Cheer on the Golden Eagles with four great seats, Section 106, Row 8, Seats 1-4. Game date to be mutually agreed upon for the 2023-2024 season.

Donor: Chris & John McDermott
and Chris Richey

Value: Priceless



Chef's Table for Ten with Wine Pairings at Mason Street Grill

Ten guests will enjoy a five course dinner in the Mason Street Grill's Private Wine Room prepared by their Executive Chef. This dinner will be hosted by their Manager, Hutch Renk, with each food course specially paired with hand-selected wines. Subject to availability. Expires September 18, 2024. Enjoy an overnight stay! This package includes five hotel rooms for one night at The Pfister Hotel.

Donors: Mike & Ginny McBride

Value: \$3,100

Join us on Twitter



Mention @LifeNavOrg and
@ESPNMilwaukee while tweeting your
photo to #2023ChallengerEvent

Most retweeted tweet wins four tickets
to the September 26 Brewers game!

Our Voice

Auction Items

**Your Bid Today Will
Make a Direct Impact**

Golf Outing for Twelve at Old Hickory.

Create your own golf outing for twelve at Old Hickory during the 2024 golf season! Established in 1920, Old Hickory Golf Club is one of the oldest and most respected golf courses in WI. Located in Beaver Dam, Old Hickory's championship-style course features more than 30 fairway and green side bunkers on a nearly 200-acre mature, rolling landscape. Old Hickory also boasts some of the best greens in the state that will surely test your skills. Package includes golf, carts, lunch and drink cart. This experience will also include \$300 worth of prizes for you to customize some fun hole events for your guests on the golf course.

Donor: Mike Harvey

Value: \$2,800



Date Night Package for a Year

Have your date nights planned for the next year with this package featuring twelve local restaurants. Includes \$350 gift cards to Lupis & Iris and Eddie Martini's; \$250 gift cards to Lake Park Bistro, The Bridgewater Modern Grill and Third Coast Provisions; \$200 gift cards to La Merenda, Bavette, Odd Duck, Tofte's Table and Birch; and \$150 gift cards to Sorella and La Dama. Try a new restaurant each month, or visit one of your favorites.

Donors: Steve Balistreri

Scott Carlson

Chris & Deb Doughty

Executive Search Partners

Greg & Sandy Groth

Tim Hansen

Scott Latzke

Kevin & Jeanie Matkin

Value: \$2,750

Our Voice

Auction Items

**Your Bid Today Will
Make a Direct Impact**

**Kentucky Bourbon Travel
Experience for Up to Six**

Experience Louisville, KY (Bourbon City) with this travel package for up to six people. Enjoy three nights at the Distil Luxury Hotel and a customizable, private bourbon tour of the area. This Kentucky Bourbon Boys tour includes private transportation, admission to three distilleries and lunch. It features private tours for two distilleries and tastings for all three. The hotel and tour gift cards cover four people, and the included \$2,000 Visa card will cover up to two guests and/or other Louisville experiences. Possibilities include the iconic Churchill Downs, Kentucky Derby Museum or Louisville Slugger Museum & Factory.

Donor: Roger & Cindy Schaus
Value: \$5,150



**TEXT NAVIGATORS23 TO 76278 AND
BID ON OUR SILENT AUCTION**

Mobile bidding through GiveSmart allows you to view items and receive updates as you are outbid during our silent auction.

Questions? Life Navigators staff are available to assist.

**Thank You to Our
Program Booklet Sponsor!**



Product Offerings

**Medicare & Medicaid Plans
Retirement Income & Annuities
Health & Life Insurance**

Contact Joseph Till Today

800-460-8238 • nationalbenefitsgroup.com



Thank You to Our Board and Challenger Event Committee

Dedicating their time and talents for kids and adults with disabilities



Board of Directors

Elizabeth Ruthmansdorfer, President
Greg Block, Vice President
Mike Dover, Past President
Lisa Voisin, Secretary & Treasurer
Adam Keller, Director-at-Large
Ray Wilson, RDC Chair

Cindy Bentley
Tim Brown
Maggie Butterfield
Christine Culver
Darryll Fortune
Stephanie Larson
Kurt Maltby
Avery Mayne
Cindy Schaus



Challenger Event Committee

Cindy Bentley
Greg Block
Maggie Butterfield
Marilyn Hackney
Larry Haskin, Committee Chair

Brian Lanser
Charlie Larson
Chris McDermott
Cindy Schaus
Lisa Voisin

Past Honorees

22 Steve "Homer" True
21 Ray & Kelly Wilson
20 Don & Joan Prachthauser
19 Chris & John McDermott
18 Mike & Ginny McBride
17 Deanna & Eric Tillisch
16 Dave & Carol Anderson
15 Harris Turer
14 Curt & Sue Culver

13 Cindy Bentley
12 John "Chin" Klein
11 Don & Kate Wilson
10 Bill & Priscilla Boelter
09 Scott Haag
08 Dick & Sue Pieper
07 John & Carole Steiner
06 Jon & Teri Vice
05 Dick & Carol Richards
04 Tom & Maripat Dalum
03 Ned & Helen Bechthold
02 Russ & Sue Darrow
01 Roger & Regina Dirksen
00 ARC Board of Directors

99 Jack & Patti McKeithan
98 John & Murph Burke
97 Jack & Jill Pelisek
96 Bill & Wendy Randall
95 Tom & Kathy Schrader
94 Stu & Ann Tisdale
93 Mike & Ginny Bolger
92 Wisconsin Bell
91 Roger Fitzsimonds
90 Stephen N. Graff
89 Charlie & Ann McNeer
88 Ben Marcus
87 Fred & Anne Luber
86 James O. Wright

Challenger Event Donors

A.J. Ugent Furs
 Tim & Jennifer Anderson
 Apple Holler
 Arbit Orthodontics
 Associated Bank
 Baird
 Steve Balistreri
 Beer Capitol Distributing
 Cindy Bentley
 Betty Brinn Children's
 Museum
 Bittercube
 Black Shoe Hospitality
 Greg & Jessica Block
 David Boerke
 The Boerke Company
 Bookworm Gardens
 Breadsmith
 Tim Brown
 Joe & Emily Bukowski
 The Business Journal of
 Greater Milwaukee
 Mick Butterfield
 Mike & Maggie Butterfield
 Camp Bar/Hackbarth
 Hospitality Group
 CannedWater4Kids
 Scott Carlson
 Circle Electric, Inc.
 Costco Warehouse
 Cramer-Krasselt
 Creative Graphics
 Curt & Sue Culver
 Nick Curran
 Tom & Maripat Dalum
 Russ & Sue Darrow
 Doering Leasing Co.
 DoubleTree by Hilton
 Milwaukee Downtown
 Chris & Deb Doughty
 Mike & Beth Dover
 East Troy Railroad
 Museum
 Elsa's On the Park
 Emerys Cycling
 Entasis Asset
 Management
 Events By Design
 Executive Search
 Partners
 First Business Bank
 Fleming's Prime
 Steakhouse
 Float Milwaukee
 Darryll & Melanie Fortune

Friends of Boerner
 Botanical Gardens
 Friends of the Domes
 Friends of Wehr
 Nature Center
 Full Circle Construction
 Godfrey & Kahn
 GOLFTEC Wisconsin
 Grace Yuergens, Ava
 Yuergens & Ben Otto
 Great Midwest Bank
 Green Bay Packers
 Greg & Sandy Groth
 Andrew Haag
 Scott & Linda Haag
 Marilyn Hackney
 Tim Hansen
 Harbor Shores on
 Lake Geneva
 Mike Harvey
 Larry & Holly Haskin
 Haskin Law Office
 Megann Hendrix
 The Hickory Fund
 Impact General
 Contracting
 Imprint Digital Printing
 Tom & Christine Irgens
 Jelly Belly
 Jimmy Luv's
 John's Crazy Socks
 Johnson Financial Group
 Kasey Tillisch
 Jerry & Laurie Kaye
 Adam & Elizabeth Keller
 Kendra Scott
 Kenosha Public
 Museums
 Kesslers Diamonds
 Koss Corporation
 Todd & Liz Krieg
 Dave Kundert
 Lagniappe Brasserie
 Lake Geneva Cruise Line
 Lakefront Brewery
 Lakeshore Chinooks
 Brian & Sue Lanser
 Charlie & Stephanie
 Larson
 Dr. Craig Larson and Ann
 M. Larson Living Trust
 Scott Latzke
 Lemberg
 Lynden Sculpture Garden
 Kurt & Jenni Maltby

Marcus Performing
 Arts Center
 Mark Hines Photography
 Kevin & Jeanie Matkin
 Gary & Deb Mayer
 Avery Mayne
 Duane & Connie
 McAllister
 Mike & Ginny McBride
 John & Cathy McCarthy
 Chris & John McDermott
 Dick & Mary Lou McGuire
 Milwaukee Community
 Sailing Center
 Milwaukee Food Tours
 Milwaukee Milkmen
 Milwaukee Public
 Museum
 Morningstar Golfers Club
 Murphy & Prachthauser
 National Benefits Group
 North Shore Country
 Club
 O'Leary & Anick
 Outpost Natural Foods
 Ozaukee Country Club
 Paul's Jewelers
 Pegasus Partners
 PepsiCo
 Jim Phillips
 Dick & Sue Pieper
 Pieper Electric
 John & Maryanne Plant
 PNC Bank
 Prairie Trust
 Quarles
 R&B Wagner, Inc.
 The Racine Zoo
 Reinhart Boerner Van
 Deuren s.c.
 Hutch, Brenda and
 Allison Renk
 Chris Richey
 River Club of Mequon
 The Riverwood Wealth
 Management Group
 at Morgan Stanley
 Robertson Ryan &
 Associates
 Ruby & Jewels LLC
 Thomas & Elizabeth
 Ruthmansdorfer
 Ruthmansdorfer Law
 Group, S.C.
 SALA

Roger & Cindy Schaus
 Schlitz Audubon
 Nature Center
 Shorewest Realtors
 Jon Shorougian
 Skilos
 S. Milwaukee Performing
 Arts Center
 Amanda Stahmann
 Scott & Mary Ellen
 Stanek
 Mike & Nancy Steffes
 Stephen L Werner C.L.U
 & Associates
 The Stilt House
 Stone Creek Coffee
 Dave & Paula Strelitz
 Suburban Asphalt Co.
 Swimming Pool Services
 Third Space Brewing
 Eric & Deanna Tillisch
 Steve "Homer" True
 Harris & Pam Turer
 Union House
 Urban Ecology Center
 Jeff & Lisa Voisin
 John & Vicki Wachniak
 Washington County
 Golf Course
 Westmoor Country Club
 Ray & Kelly Wilson
 Dan & Amanda Witkofski
 Woodman's Markets
 Yo Mama! Frozen Yogurt
 Jay Yuergens & Joni
 Anderson-Yuergens
 Zilber Property Group
 Zoological Society
 of Milwaukee



Thank you to our donors
 who committed after the
 printing of this program